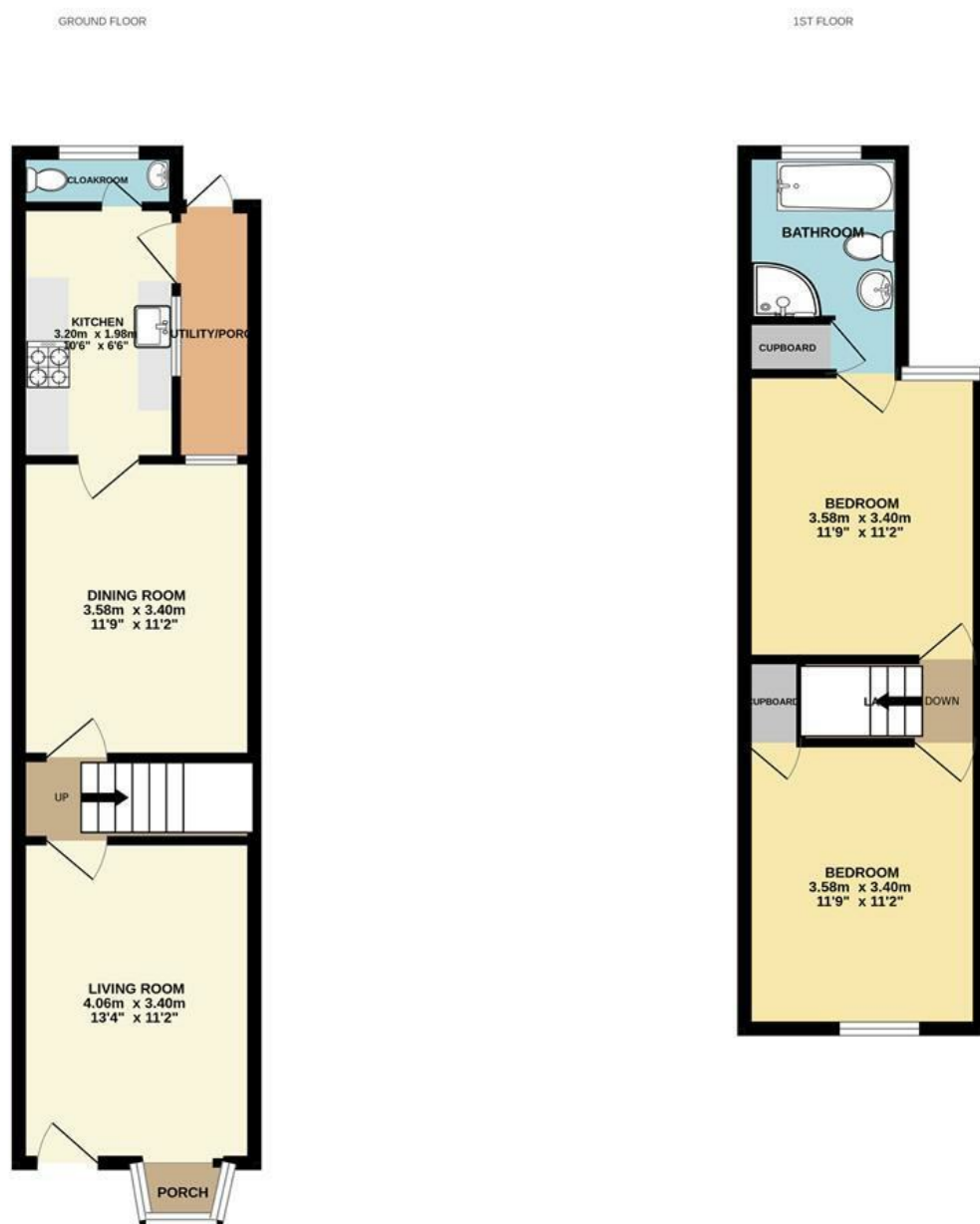




Dover Street | Norwich | NR2  
Offers In Excess Of £285,000

abbotFox



Energy Efficiency Rating		Current	Potential
Very energy efficient - lower running costs			
(92 plus) A			
(81-91) B			
(69-80) C			
(55-68) D			
(39-54) E			
(21-38) F			
(1-20) G			
Not energy efficient - higher running costs			
<b>England &amp; Wales</b>		EU Directive 2002/91/EC	

Disclaimer – In accordance with the Property Misdescriptions Act, the company gives notice that all descriptions, references to condition, necessary permissions for use and other details are given in good faith and believed to be correct, but any intending lessees do not rely on them as statements of fact, but must satisfy themselves by inspection or other means, as to their accuracy.



abbotFox presents this bay-fronted mid terraced house, set in the heart of the ever-popular Golden Triangle area of Norwich. With a wealth of amenities on the doorstep, this home offers an exceptional degree of convenience, and would be a perfect opportunity for any first time buyer.

Accommodation comprises; bay-fronted lounge, dining room, kitchen, cloakroom and utility / lean to, to the ground floor, with two generous bedrooms and a stylish family bathroom to the first floor. Externally, the property also benefits from a private rear garden and an additional timber studio space, ideal for those working from home.

An internal viewing comes highly recommended.

